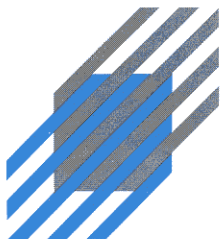


S U P P L Y I N G C L E A N A I R T O I N D U S T R Y

MODEL AQE4000 Overhead Cartridge System



The new Overhead Cartridge System from Air Quality Engineering Inc. is a self-contained, continuous-cleaning cartridge media air cleaner for use in source capture applications in industry. The Model AQE4000 can be ordered in one and two arm configurations or permanently ducted to capture contaminants such as welding smoke, grinding dust, plastic dust and other fine particles.



**AIR QUALITY
ENGINEERING**

Manufacturer and Worldwide Distributor of Air Cleaning Systems for Over 25 Years

AQE4000 FEATURES & SPECIFICATIONS

Principles of Operation:

Airborne contaminants enter the AQE4000 through the optional hood/arm assembly at a rate of 1250 cubic feet of air per minute (cfm) per arm. Heavy particles are propelled downward through the venturi and into the clean out drawer. Small submicron particles are then trapped within the pleats of the four 99.8% efficient cartridge filters. The cleaned air is then discharged through the back of the unit. The cartridge filters are cleaned automatically using a Goyen valve reverse pulse system and a solid state automatic control timer.

STANDARD FEATURES:

- Automatic cleaning system.
- Solid State, Control Timer.
- 5 hp TEFC motor.
- 1100 square feet of media.
- 99.8% efficient at .5 micron.
- Disconnect and overload protection.
- Three year limited warranty.

OPTIONAL FEATURES:

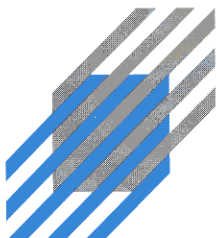
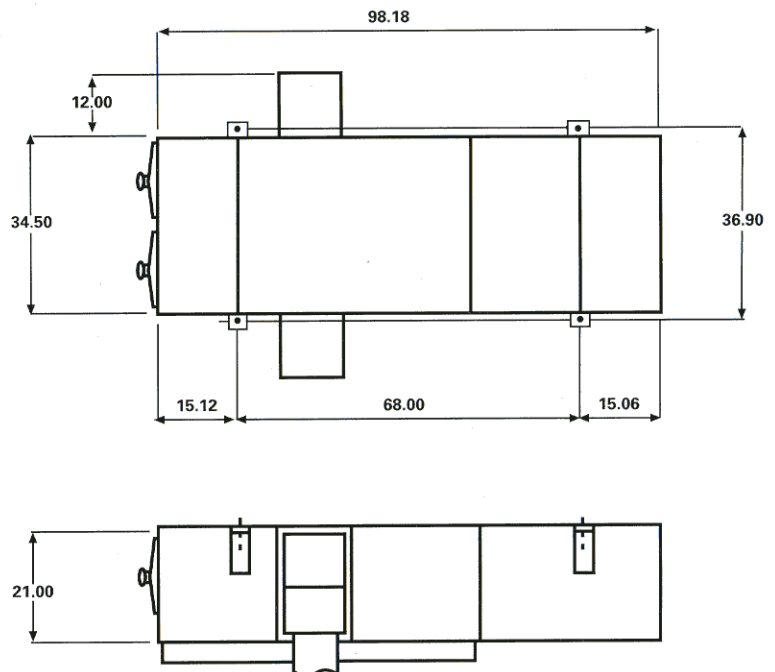
- Externally supported 11' and 14' arms with 360° rotation.
- Double arm configuration.
- Photohelic controller.
- Hood mounted blower controls.
- Hood mounted halogen light.

CONTROLS:

All models include control circuitry and thermal protection.

SPECIFICATIONS:

DIMENSIONS:	21" H x 58" W x 98" D
WEIGHT:	Unit 656 lbs. Optional Arm: 11' - 68 lbs., 14' - 73 lbs.
ARM ASSEMBLY (OPTIONAL):	14' and 11' long x 8" diameter. Externally supported arm with full 360° arm rotation. Arm assembly incorporated a gas spring which provides easy up and down movement. 18 ga aluminum hood with handle. Hood moves easily vertically and horizontally.
AIR FLOW VOLUME:	2500 cfm total. 1250 per arm.
MOTOR:	5 HP TEFC.
BLOWER:	Direct drive, backward incline. Air Foil Wheel 13.5" diameter.
CABINET CONSTRUCTION:	16 Ga. welded steel.
CONTROL TIMER:	Pulse frequency adjustable from 15 seconds to 20 minutes.
POWER:	208-240V 13.4 amps max 3 phase. 440-480V 6.6 amps max 3 phase.
FINISH:	Durable baked enamel paint.
FILTRATION:	Four high efficiency cartridge filters. 12 ³ / ₄ " diameter x 30". 1100 sq. ft. total. 99.8% efficient at .5 micron.
FILTER ACCESS:	End load through access covers.
FILTER CLEANING:	Self-Cleaning Reverse Pulse Jet System which utilizes two, one inch Goyen diaphragm valves. Requires 80-120 psi of shop supplied compressed air.
NOISE LEVEL:	79 dBA at 6'.
WARRANTY:	Limited three year warranty.



**AIR QUALITY
ENGINEERING**

7140 Northland Drive North, Brooklyn Park, MN 55428-1520 USA

FAX: (763) 531-9900 EMAIL: aqe@isd.net WEB SITE: www.air-quality-eng.com

TOLL FREE: 1-800-328-0787

Air Quality Engineering, Inc., has a policy of continuing product improvement, and reserves the right to make changes in design and specification without notice.

PN51676